

UK 10-DREHSI (5X20) - Fuse modular terminal block



3005109

<https://www.phoenixcontact.com/in/products/3005109>

Please be informed that the data shown in this PDF document is generated from our Online Catalog. Please find the complete data in the user documentation. Our General Terms of Use for Downloads are valid.



Fuse terminal block for cartridge fuse insert, cross section: 0.5 - 16 mm², AWG: 24 - 6, width: 12 mm, color: black

Your advantages

- Can be bridged with FBI ... fixed bridge

Commercial Data

Item number	3005109
Packing unit	50 pc
Minimum order quantity	1 pc
Sales Key	BE1
Product Key	BE1235
Catalog Page	Page 496 (C-1-2019)
GTIN	4017918091040
Weight per Piece (including packing)	33.663 g
Weight per Piece (excluding packing)	33.663 g
Customs tariff number	25093400
Country of origin	IN

Technical Data

Notes

General

Note	The current is determined by the fuse used, the voltage by the fuse or selected light indicator.
------	--

Product properties

Product type	Fuse terminal block
Number of positions	1
Number of connections	2
Number of rows	1
Potentials	1

Insulation characteristics

Overvoltage category	III
Degree of pollution	3

Electrical properties

Fuse type	Glass / ceramics / ...
Rated surge voltage	4 kV
Maximum power dissipation for nominal condition	2.43 W
Fuse	G / 5 x 20

Connection data

Number of connections per level	2
Nominal cross section	16 mm ²

Level 1 above 1 below 1

Screw thread	M4
Tightening torque	1.5 ... 1.8 Nm
Stripping length	11 mm
Internal cylindrical gage	B6
Connection in acc. with standard	IEC 60947-7-3
Conductor cross section rigid	0.5 mm ² ... 16 mm ²
Cross section AWG	20 ... 6 (converted acc. to IEC)
Conductor cross section flexible	0.5 mm ² ... 16 mm ²
Conductor cross section, flexible [AWG]	20 ... 6 (converted acc. to IEC)
Conductor cross-section flexible (ferrule without plastic sleeve)	0.5 mm ² ... 10 mm ²
Flexible conductor cross section (ferrule with plastic sleeve)	0.5 mm ² ... 10 mm ²
Cross-section with insertion bridge, rigid	10 mm ²
Cross-section with insertion bridge, flexible	10 mm ²
2 conductors with same cross section, solid	0.5 mm ² ... 4 mm ²
2 conductors with same cross section, flexible	0.5 mm ² ... 4 mm ²

UK 10-DREHSI (5X20) - Fuse modular terminal block



3005109

<https://www.phoenixcontact.com/in/products/3005109>

2 conductors with same cross section, flexible, with ferrule without plastic sleeve	0.5 mm ² ... 4 mm ²
2 conductors with the same cross section, flexible, with TWIN ferrule with plastic sleeve	0.5 mm ² ... 10 mm ²
Nominal current	10 A
Maximum load current	10 A
Nominal voltage	500 V (As a fuse terminal block) 800 V (As a disconnect terminal block)
Nominal cross section	1.5 mm ²

Dimensions

Width	12 mm
Height NS 35/15	64.7 mm
Height NS 35/7,5	57.2 mm
Height	2.323 "
Height NS 32	62.2 mm
Length	62 mm

Material specifications

Color	black
Flammability rating according to UL 94	V0
Insulating material group	I
Insulating material	PA
Static insulating material application in cold	-60 °C
Temperature index of insulation material (DIN EN 60216-1 (VDE 0304-21))	130 °C
Relative insulation material temperature index (Elec., UL 746 B)	130 °C
Fire protection for rail vehicles (DIN EN 45545-2) R22	HL 1 - HL 3
Fire protection for rail vehicles (DIN EN 45545-2) R23	HL 1 - HL 3
Fire protection for rail vehicles (DIN EN 45545-2) R24	HL 1 - HL 3
Fire protection for rail vehicles (DIN EN 45545-2) R26	HL 1 - HL 3
Surface flammability NFPA 130 (ASTM E 162)	passed
Specific optical density of smoke NFPA 130 (ASTM E 662)	passed
Smoke gas toxicity NFPA 130 (SMP 800C)	passed

Mechanical properties

Mechanical data

Open side panel	No
-----------------	----

Environmental and real-life conditions

Oscillation/broadband noise

Specification	DIN EN 50155 (VDE 0115-200):2008-03
Spectrum	Service life test category 1, class B, body mounted
Frequency	f ₁ = 5 Hz to f ₂ = 150 Hz

UK 10-DREHSI (5X20) - Fuse modular terminal block



3005109

<https://www.phoenixcontact.com/in/products/3005109>

ASD level	1.857 (m/s ²)/Hz
Acceleration	0.8g
Test duration per axis	5 h
Test directions	X-, Y- and Z-axis
Result	Test passed

Shocks

Specification	DIN EN 50155 (VDE 0115-200):2008-03
Pulse shape	Half-sine
Acceleration	5g
Shock duration	30 ms
Number of shocks per direction	3
Test directions	X-, Y- and Z-axis (pos. and neg.)
Result	Test passed

Ambient conditions

Ambient temperature (operation)	-60 °C ... 105 °C (max. short-term operating temperature RTI Elec.)
Ambient temperature (storage/transport)	-25 °C ... 60 °C (for a short time, not exceeding 24 h, -60 °C to +70 °C)
Ambient temperature (assembly)	-5 °C ... 70 °C
Ambient temperature (actuation)	-5 °C ... 70 °C
Permissible humidity (storage/transport)	30 % ... 70 %

Standards and regulations

Connection in acc. with standard	IEC 60947-7-3
----------------------------------	---------------

Mounting

Mounting type	NS 35/7,5
	NS 35/15
	NS 32

UK 10-DREHSI (5X20) - Fuse modular terminal block

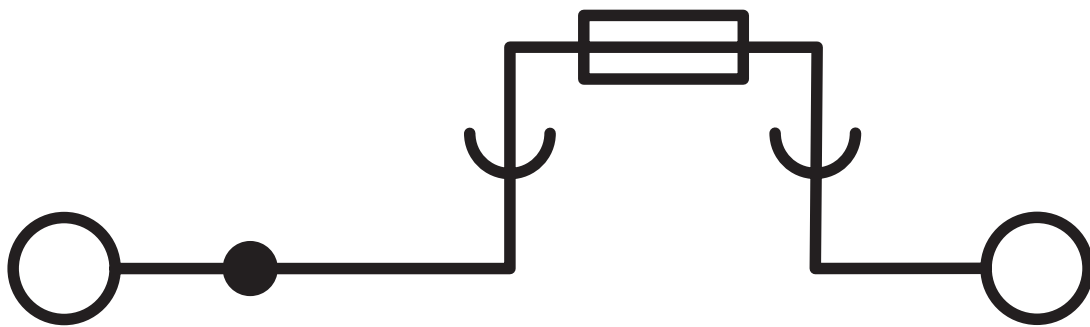


3005109

<https://www.phoenixcontact.com/in/products/3005109>

Drawings

Circuit diagram




UK 10-DREHSI (5X20) - Fuse modular terminal block




3005109


<https://www.phoenixcontact.com/in/products/3005109>


Approvals


 CSA Approval ID: 13631				
	Nominal Voltage U_N	Nominal Current I_N	Cross Section AWG	Cross Section mm^2
	300 V	20 A	22 - 6	-
	300 V	20 A	22 - 6	-

 IECEE CB Scheme Approval ID: NL-56826/A1				
	Nominal Voltage U_N	Nominal Current I_N	Cross Section AWG	Cross Section mm^2
	800 V	-	-	0.5 - 16

 EAC Approval ID: RU C-DE.BL08.B.00534				
---	--	--	--	--

 LR Approval ID: LR2004271TA				
---	--	--	--	--

 cULus Recognized Approval ID: E60425				
	Nominal Voltage U_N	Nominal Current I_N	Cross Section AWG	Cross Section mm^2
	300 V	20 A	24 - 6	-
	300 V	20 A	24 - 6	-
	500 V	20 A	24 - 6	-

 KEMA-KEUR Approval ID: 71-119846				
	Nominal Voltage U_N	Nominal Current I_N	Cross Section AWG	Cross Section mm^2
	-	10 A	-	0.5 - 16

UK 10-DREHSI (5X20) - Fuse modular terminal block



3005109

<https://www.phoenixcontact.com/in/products/3005109>

Classifications

ECLASS

ECLASS-11.0	27141116
ECLASS-12.0	27141116
ECLASS-13.0	27250113

ETIM

ETIM 8.0	EC000899
----------	----------

UNSPSC

UNSPSC 21.0	39121400
-------------	----------

UK 10-DREHSI (5X20) - Fuse modular terminal block



3005109

<https://www.phoenixcontact.com/in/products/3005109>

Environmental Product Compliance

REACH SVHC	Lead 7439-92-1
China RoHS	Environmentally Friendly Use Period = 50 years
	For information on hazardous substances, refer to the manufacturer's declaration available under "Downloads"

3005109

<https://www.phoenixcontact.com/in/products/3005109>

Accessories

 Note: Applying some accessories below might limit this product.

FBI 2-12 - Fixed bridge

0200075

<https://www.phoenixcontact.com/in/products/0200075>



Fixed bridge, pitch: 12 mm, number of positions: 2, length: 8 mm, color: silver

FBI 10-12 - Fixed bridge

0203454

<https://www.phoenixcontact.com/in/products/0203454>



Fixed bridge, pitch: 12 mm, number of positions: 10, length: 8 mm, color: silver

 Max. current carrying capacity: 63 A

UK 10-DREHSI (5X20) - Fuse modular terminal block



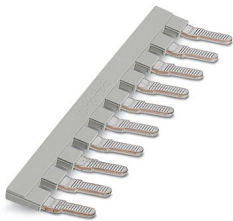
3005109

<https://www.phoenixcontact.com/in/products/3005109>


EB 10-12 - Insertion bridge

3006137

<https://www.phoenixcontact.com/in/products/3006137>



Insertion bridge, pitch: 12 mm, number of positions: 10, color: gray

 Max. current carrying capacity: 63 A

SZS 1,0X4,0 VDE - Screwdriver

1205066

<https://www.phoenixcontact.com/in/products/1205066>



Screwdriver, slot-headed, VDE insulated, size: 1.0 x 4.0 x 100 mm, 2-component grip, with non-slip grip

UK 10-DREHSI (5X20) - Fuse modular terminal block



3005109

<https://www.phoenixcontact.com/in/products/3005109>

FUSE CAP (5X20)-DREHSI - Fuse holder

1006736

<https://www.phoenixcontact.com/in/products/1006736>



Fuse holder, sleeve length: 13.2 mm, length: 22.5 mm, diameter: 11 mm, color: black

NS 32 PERF 2000MM-VPE 10 - DIN rail perforated

1201002

<https://www.phoenixcontact.com/in/products/1201002>



DIN rail perforated, acc. to EN 60715, material: Steel, galvanized, passivated with a thick layer, G profile, color: silver, Pack of 10 (20 m)

UK 10-DREHSI (5X20) - Fuse modular terminal block



3005109

<https://www.phoenixcontact.com/in/products/3005109>

NS 32 UNPERF 2000MM-VPE 10 - DIN rail, unperforated

1201015

<https://www.phoenixcontact.com/in/products/1201015>



DIN rail, unperforated, acc. to EN 60715, material: Steel, galvanized, passivated with a thick layer, G profile, color: silver, Pack of 10 (20 m)

NS 35/ 7,5 PERF 2000MM - DIN rail perforated

0801733

<https://www.phoenixcontact.com/in/products/0801733>



DIN rail perforated, acc. to EN 60715, material: Steel, galvanized, passivated with a thick layer, Standard profile, color: silver, Pack of 25 (50 m)

UK 10-DREHSI (5X20) - Fuse modular terminal block



3005109

<https://www.phoenixcontact.com/in/products/3005109>

NS 35/ 7,5 UNPERF 2000MM - DIN rail, unperforated

0801681

<https://www.phoenixcontact.com/in/products/0801681>



DIN rail, unperforated, acc. to EN 60715, material: Steel, galvanized, passivated with a thick layer, Standard profile, color: silver, Pack of 25 (50 m)

NS 35/ 7,5 WH PERF 2000MM - DIN rail perforated

1204119

<https://www.phoenixcontact.com/in/products/1204119>



DIN rail perforated, acc. to EN 60715, material: Steel, Galvanized, white passivated, Standard profile, color: silver, Pack of 25 (50 m)

UK 10-DREHSI (5X20) - Fuse modular terminal block



3005109

<https://www.phoenixcontact.com/in/products/3005109>

NS 35/ 7,5 WH UNPERF 2000MM-VPE 10 - DIN rail, unperforated

1204122

<https://www.phoenixcontact.com/in/products/1204122>



DIN rail, unperforated, acc. to EN 60715, material: Steel, Galvanized, white passivated, Standard profile, color: silver, Pack of 10 (20 m)

NS 35/ 7,5 AL UNPERF 2000MM - DIN rail, unperforated

0801704

<https://www.phoenixcontact.com/in/products/0801704>



DIN rail, unperforated, acc. to EN 60715, material: Aluminum, uncoated, Standard profile, color: silver, Pack of 25 (50 m)

UK 10-DREHSI (5X20) - Fuse modular terminal block



3005109

<https://www.phoenixcontact.com/in/products/3005109>

NS 35/ 7,5 ZN PERF 2000MM - DIN rail perforated

1206421

<https://www.phoenixcontact.com/in/products/1206421>



DIN rail perforated, acc. to EN 60715, material: Steel, galvanized, Standard profile, color: silver, Pack of 25 (50 m)

NS 35/ 7,5 ZN UNPERF 2000MM - DIN rail, unperforated

1206434

<https://www.phoenixcontact.com/in/products/1206434>



DIN rail, unperforated, acc. to EN 60715, material: Steel, galvanized, Standard profile, color: silver, Pack of 25 (50 m)

UK 10-DREHSI (5X20) - Fuse modular terminal block



3005109

<https://www.phoenixcontact.com/in/products/3005109>

NS 35/ 7,5 CU UNPERF 2000MM-VPE 10 - DIN rail, unperforated

0801762

<https://www.phoenixcontact.com/in/products/0801762>



DIN rail, unperforated, acc. to EN 60715, material: Copper, uncoated, Standard profile, color: copper-colored, Pack of 10 (20 m)

NS 35/ 7,5 CAP - End cap

1206560

<https://www.phoenixcontact.com/in/products/1206560>

DIN rail end piece, for DIN rail NS 35/7.5



UK 10-DREHSI (5X20) - Fuse modular terminal block



3005109

<https://www.phoenixcontact.com/in/products/3005109>

NS 35/15 PERF 2000MM - DIN rail perforated

1201730

<https://www.phoenixcontact.com/in/products/1201730>



DIN rail perforated, similar to EN 60715, material: Steel, galvanized, passivated with a thick layer, Standard profile, color: silver, Pack of 25 (50 m)

NS 35/15 UNPERF 2000MM - DIN rail, unperforated

1201714

<https://www.phoenixcontact.com/in/products/1201714>



DIN rail, unperforated, similar to EN 60715, material: Steel, galvanized, passivated with a thick layer, Standard profile, color: silver, Pack of 25 (50 m)

UK 10-DREHSI (5X20) - Fuse modular terminal block



3005109

<https://www.phoenixcontact.com/in/products/3005109>

NS 35/15 WH PERF 2000MM - DIN rail perforated

0806602

<https://www.phoenixcontact.com/in/products/0806602>



DIN rail perforated, similar to EN 60715, material: Steel, Galvanized, white passivated, Standard profile, color: white, Pack of 25 (50 m)

NS 35/15 WH UNPERF 2000MM-VPE 10 - DIN rail, unperforated

1204135

<https://www.phoenixcontact.com/in/products/1204135>



DIN rail, unperforated, similar to EN 60715, material: Steel, Galvanized, white passivated, Standard profile, color: silver, Pack of 10 (20 m)

UK 10-DREHSI (5X20) - Fuse modular terminal block



3005109

<https://www.phoenixcontact.com/in/products/3005109>

NS 35/15 AL UNPERF 2000MM - DIN rail, unperforated

1201756

<https://www.phoenixcontact.com/in/products/1201756>



DIN rail, unperforated, similar to EN 60715, material: Aluminum, uncoated, Standard profile, color: silver

NS 35/15 ZN PERF 2000MM - DIN rail perforated

1206599

<https://www.phoenixcontact.com/in/products/1206599>



DIN rail perforated, similar to EN 60715, material: Steel, galvanized, Standard profile, color: silver, Pack of 25 (50 m)

UK 10-DREHSI (5X20) - Fuse modular terminal block



3005109

<https://www.phoenixcontact.com/in/products/3005109>

NS 35/15 ZN UNPERF 2000MM - DIN rail, unperforated

1206586

<https://www.phoenixcontact.com/in/products/1206586>



DIN rail, unperforated, similar to EN 60715, material: Steel, galvanized, Standard profile, color: silver, Pack of 25 (50 m)

NS 35/15 CU UNPERF 2000MM-VPE 10 - DIN rail, unperforated

1201895

<https://www.phoenixcontact.com/in/products/1201895>



DIN rail, unperforated, similar to EN 60715, material: Copper, uncoated, Standard profile, color: copper-colored, Pack of 10 (20 m)

UK 10-DREHSI (5X20) - Fuse modular terminal block



3005109

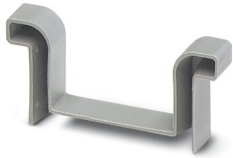
<https://www.phoenixcontact.com/in/products/3005109>

NS 35/15 CAP - End cap

1206573

<https://www.phoenixcontact.com/in/products/1206573>

DIN rail end piece, for DIN rail NS 35/15



NS 35/15-2,3 UNPERF 2000MM-VPE 10 - DIN rail, unperforated

1201798

<https://www.phoenixcontact.com/in/products/1201798>

DIN rail, unperforated, acc. to EN 60715, material: Steel, galvanized, passivated with a thick layer, Standard profile 2.3 mm, color: silver, Pack of 10 (20 m)



UK 10-DREHSI (5X20) - Fuse modular terminal block



3005109

<https://www.phoenixcontact.com/in/products/3005109>

ZB 6:UNBEDRUCKT - Zack marker strip

1051003

<https://www.phoenixcontact.com/in/products/1051003>



Zack marker strip, Strip, white, unlabeled, can be labeled with: PLOTMARK, CMS-P1-PLOTTER, mounting type: snapped, for terminal block width: 6.2 mm, lettering field size: 6.15 x 10.5 mm, Number of individual labels: 10

ZB 6 CUS - Zack marker strip

0824992

<https://www.phoenixcontact.com/in/products/0824992>



Zack marker strip, can be ordered: Strip, white, labeled according to customer specifications, mounting type: snap into tall marker groove, for terminal block width: 6.2 mm, lettering field size: 6.15 x 10.5 mm, Number of individual labels: 10

UK 10-DREHSI (5X20) - Fuse modular terminal block

3005109

<https://www.phoenixcontact.com/in/products/3005109>

ZB 6,LGS:FORTL.ZAHLEN - Zack marker strip

1051016

<https://www.phoenixcontact.com/in/products/1051016>

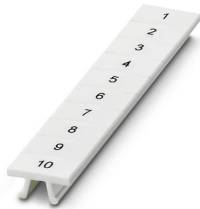


Zack marker strip, Strip, white, labeled, can be labeled with: CMS-P1-PLOTTER, printed horizontally: consecutive numbers 1 ... 10, 11 ... 20, etc. up to 491 ... 500, mounting type: snapped, for terminal block width: 6.2 mm, lettering field size: 6. 15 x 10.5 mm, Number of individual labels: 10

ZB 6,QR:FORTL.ZAHLEN - Zack marker strip

1051029

<https://www.phoenixcontact.com/in/products/1051029>



Zack marker strip, Strip, white, labeled, can be labeled with: CMS-P1-PLOTTER, Printed vertically: consecutive numbers 1 ... 10, 11 ... 20, etc. up to 491 ... 500, mounting type: snapped, for terminal block width: 6.2 mm, lettering field size: 6. 15 x 10.5 mm, Number of individual labels: 10

UK 10-DREHSI (5X20) - Fuse modular terminal block



3005109

<https://www.phoenixcontact.com/in/products/3005109>

ZB 6,LGS:GLEICHE ZAHLEN - Zack marker strip

1051032

<https://www.phoenixcontact.com/in/products/1051032>



Zack marker strip, Strip, white, labeled, can be labeled with: CMS-P1-PLOTTER, printed horizontally: Identical numbers 1 or 2, etc. up to 100, mounting type: snapped, for terminal block width: 6.2 mm, lettering field size: 6.15 x 10.5 mm, Number of individual labels: 10

ZB 6,LGS:L1-N,PE - Marker for terminal blocks

1051414

<https://www.phoenixcontact.com/in/products/1051414>



Marker for terminal blocks, Strip, white, labeled, can be labeled with: CMS-P1-PLOTTER, horizontal: L1, L2, L3, N, PE, L1, L2, L3, N, PE, mounting type: snapped, for terminal block width: 6.2 mm, lettering field size: 6.15 x 10.5 mm, Number of individual labels: 10

UK 10-DREHSI (5X20) - Fuse modular terminal block



3005109

<https://www.phoenixcontact.com/in/products/3005109>

ZB 6,LGS:U-N - Marker for terminal blocks

1051430

<https://www.phoenixcontact.com/in/products/1051430>



Marker for terminal blocks, Strip, white, labeled, can be labeled with: CMS-P1-PLOTTER, printed horizontally: U, V, W, N, GND, U, V, W, N, GND, mounting type: snapped, for terminal block width: 6.2 mm, lettering field size: 6.15 x 10.5 mm, Number of individual labels: 10

UC-TM 6 - Marker for terminal blocks

0818085

<https://www.phoenixcontact.com/in/products/0818085>



Marker for terminal blocks, Sheet, white, unlabeled, can be labeled with: BLUEMARK ID COLOR, BLUEMARK ID, BLUEMARK CLED, PLOTMARK, CMS-P1-PLOTTER, mounting type: snapped, for terminal block width: 6.2 mm, lettering field size: 5.6 x 10.5 mm, Number of individual labels: 80

UK 10-DREHSI (5X20) - Fuse modular terminal block



3005109

<https://www.phoenixcontact.com/in/products/3005109>

UC-TM 6 CUS - Marker for terminal blocks

0824589

<https://www.phoenixcontact.com/in/products/0824589>



Marker for terminal blocks, can be ordered: by sheet, white, labeled according to customer specifications, mounting type: snap into tall marker groove, for terminal block width: 6.2 mm, lettering field size: 5.6 x 10.5 mm, Number of individual labels: 80

UCT-TM 6 - Marker for terminal blocks

0828736

<https://www.phoenixcontact.com/in/products/0828736>



Marker for terminal blocks, Sheet, white, unlabeled, can be labeled with: TOPMARK NEO, TOPMARK LASER, BLUEMARK ID COLOR, BLUEMARK ID, BLUEMARK CLED, THERMOMARK PRIME, THERMOMARK CARD 2.0, THERMOMARK CARD, mounting type: snapped, for terminal block width: 6.2 mm, lettering field size: 5.6 x 10.5 mm, Number of individual labels: 60

UK 10-DREHSI (5X20) - Fuse modular terminal block



3005109

<https://www.phoenixcontact.com/in/products/3005109>

UCT-TM 6 CUS - Marker for terminal blocks

0829602

<https://www.phoenixcontact.com/in/products/0829602>



Marker for terminal blocks, can be ordered: by sheet, white, labeled according to customer specifications, mounting type: snap into tall marker groove, for terminal block width: 6.2 mm, lettering field size: 5.6 x 10.5 mm, Number of individual labels: 60

CLIPFIX 35 - End clamp

3022218

<https://www.phoenixcontact.com/in/products/3022218>



Quick mounting end clamp for NS 35/7,5 DIN rail or NS 35/15 DIN rail, with marking option, width: 9.5 mm, color: gray

UK 10-DREHSI (5X20) - Fuse modular terminal block

3005109

<https://www.phoenixcontact.com/in/products/3005109>

CLIPFIX 35-5 - End clamp

3022276

<https://www.phoenixcontact.com/in/products/3022276>

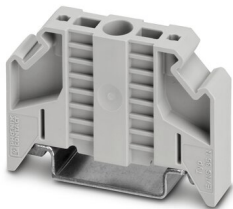


Quick mounting end clamp for NS 35/7,5 DIN rail or NS 35/15 DIN rail, with marking option, with parking option for FBS...5, FBS...6, KSS 5, KSS 6, width: 5.15 mm, color: gray

E/NS 35 N - End clamp

0800886

<https://www.phoenixcontact.com/in/products/0800886>



End clamp, width: 9.5 mm, color: gray

UK 10-DREHSI (5X20) - Fuse modular terminal block

3005109

<https://www.phoenixcontact.com/in/products/3005109>

E/UK - End clamp

1201442

<https://www.phoenixcontact.com/in/products/1201442>

End clamp, material: PA, color: gray, Mounting on a DIN rail NS 32 or NS 35



E/UK 1 - End clamp

1201413

<https://www.phoenixcontact.com/in/products/1201413>

End clamps, for supporting the ends of double-level and three-level terminal blocks, width: 10 mm, color: gray



UK 10-DREHSI (5X20) - Fuse modular terminal block



3005109

<https://www.phoenixcontact.com/in/products/3005109>

PSBJ 4/15/6 FARBLOS - Female test connector

0303419

<https://www.phoenixcontact.com/in/products/0303419>



Female test connector, number of positions: 1, fuse type: , mounting type: , , , color: transparent

PSBJ 4/15/6 WH - Female test connector

0303312

<https://www.phoenixcontact.com/in/products/0303312>



Female test connector, number of positions: 1, fuse type: , mounting type: , , , color: white

UK 10-DREHSI (5X20) - Fuse modular terminal block



3005109

<https://www.phoenixcontact.com/in/products/3005109>

PSBJ 4/15/6 RD - Female test connector

0303325

<https://www.phoenixcontact.com/in/products/0303325>



Female test connector, number of positions: 1, fuse type: , mounting type: , , ,
color: red

PSBJ 4/15/6 BU - Female test connector

0303354

<https://www.phoenixcontact.com/in/products/0303354>



Female test connector, number of positions: 1, fuse type: , mounting type: , , ,
color: blue

UK 10-DREHSI (5X20) - Fuse modular terminal block



3005109

<https://www.phoenixcontact.com/in/products/3005109>

PSBJ 4/15/6 YE - Female test connector

0303367

<https://www.phoenixcontact.com/in/products/0303367>



Female test connector, number of positions: 1, fuse type: , mounting type: , , ,
color: yellow

PSBJ 4/15/6 GN - Female test connector

0303370

<https://www.phoenixcontact.com/in/products/0303370>



Female test connector, number of positions: 1, fuse type: , mounting type: , , ,
color: green

UK 10-DREHSI (5X20) - Fuse modular terminal block



3005109

<https://www.phoenixcontact.com/in/products/3005109>

PSBJ 4/15/6 VT - Female test connector

0303383

<https://www.phoenixcontact.com/in/products/0303383>



Female test connector, number of positions: 1, fuse type: , mounting type: , , ,
color: violet

PSBJ 4/15/6 GY - Female test connector

0303396

<https://www.phoenixcontact.com/in/products/0303396>



Female test connector, number of positions: 1, fuse type: , mounting type: , , ,
color: gray

UK 10-DREHSI (5X20) - Fuse modular terminal block



3005109

<https://www.phoenixcontact.com/in/products/3005109>

PSBJ 4/15/6 BK - Female test connector

0303406

<https://www.phoenixcontact.com/in/products/0303406>



Female test connector, number of positions: 1, fuse type: , mounting type: , , ,
color: black

PSB 4/7/6 - Female test connector

0303299

<https://www.phoenixcontact.com/in/products/0303299>



Female test connector, number of positions: 1, fuse type: , mounting type: , , ,
color: silver

Phoenix Contact 2023 © - all rights reserved

<https://www.phoenixcontact.com>

PHOENIX CONTACT (I) Pvt. Ltd.

A-58/2, Okhla Industrial Area, Phase - II, New Delhi-110 020

+91.1275.71420

info@phoenixcontact.co.in