

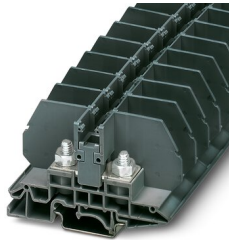
RBO 6 E - Bolt connection terminal block



3075906

<https://www.phoenixcontact.com/in/products/3075906>

Please be informed that the data shown in this PDF document is generated from our Online Catalog. Please find the complete data in the user documentation. Our General Terms of Use for Downloads are valid.



Bolt connection terminal block, nom. voltage: 800 V, nominal current: 125 A, number of connections: 2, connection method: Bolt connection, 1 level, Rated cross section: 35 mm², mounting type: NS 35/7,5, NS 35/15, NS 32, color: dark gray

Commercial Data

Item number	3075906
Packing unit	50 pc
Minimum order quantity	50 pc
Sales Key	BE4
Product Key	BE4412
GTIN	4046356532860
Weight per Piece (including packing)	99.99 g
Weight per Piece (excluding packing)	99.99 g
Customs tariff number	85369010
Country of origin	IN

RBO 6 E - Bolt connection terminal block



3075906

<https://www.phoenixcontact.com/in/products/3075906>

Technical Data

Product properties

Product type	Bolt connection terminal block
Pitch	17 mm
Number of connections	2
Number of rows	1
Potentials	1

Insulation characteristics

Overvoltage category	III
Degree of pollution	3

Electrical properties

Rated surge voltage	8 kV
Maximum power dissipation for nominal condition	1.02 W

Connection data

Number of connections per level	2
Nominal cross section	35 mm ²

1 level

Stripping length	The stripping length depends on the specification provided by the cable lug manufacturer.
Connection in acc. with standard	IEC 60947-7-1
Nominal current	125 A
Maximum load current	125 A (with 35 mm ² conductor cross section)
Nominal voltage	800 V
Note	Checked at 1100 V
Nominal cross section	35 mm ²

Cable lug connection DIN 46234:1980-03

Connection in acc. with standard	DIN 46234:1980-03
Cross section	6 mm ² ... 35 mm ²
Cross section range AWG	10 ... 2 (converted acc. to IEC)
Hole diameter	6.5 mm
Width	15 mm
Bolt diameter	6 mm
Screw thread	M6
Tightening torque	3.2 ... 3.7 Nm
Connection in acc. with standard	DIN 46237:1970-07
Cross section	2.5 mm ² ... 6 mm ²
Cross section range AWG	14 ... 10 (converted acc. to IEC)
Hole diameter	6.5 mm
Width	11 mm

RBO 6 E - Bolt connection terminal block



3075906

<https://www.phoenixcontact.com/in/products/3075906>

Bolt diameter	6 mm
Screw thread	M6
Tightening torque	3.2 ... 3.7 Nm
Identification color of ring cable lugs : blue	2.5 mm ²
Identification color of ring cable lugs : yellow	6 mm ²

Dimensions

Width	17 mm
End cover width	2.2 mm
Height	48.6 mm
Height NS 35/15	57.3 mm
Height NS 35/7,5	49.8 mm
Height NS 32	54.8 mm
Length	80.8 mm
Pitch	17 mm

Material specifications

Color	dark gray
Flammability rating according to UL 94	V2
Insulating material group	I
Insulating material	PA
Temperature index of insulation material (DIN EN 60216-1 (VDE 0304-21))	125 °C
Relative insulation material temperature index (Elec., UL 746 B)	125 °C

Electrical tests

Surge voltage test

Test voltage setpoint	9.8 kV
Result	Test passed

Temperature-rise test

Requirement temperature-rise test	Increase in temperature ≤ 45 K
Result	Test passed
Short-time withstand current 35 mm ²	4.2 kA
Result	Test passed

Power-frequency withstand voltage

Test voltage setpoint	2 kV
Result	Test passed

Mechanical properties

Mechanical data

Open side panel	No
-----------------	----

Mechanical tests

RBO 6 E - Bolt connection terminal block



3075906

<https://www.phoenixcontact.com/in/products/3075906>

Mechanical strength

Result	Test passed
--------	-------------

Attachment on the carrier

DIN rail/fixing support	NS 32/NS 35
Test force setpoint	10 N
Result	Test passed

Environmental and real-life conditions

Needle-flame test

Time of exposure	30 s
Result	Test passed

Oscillation/broadband noise

Specification	DIN EN 50155 (VDE 0115-200):2018-05
Spectrum	Service life test category 1, class B, body mounted
Frequency	$f_1 = 5 \text{ Hz}$ to $f_2 = 150 \text{ Hz}$
ASD level	$1.857 \text{ (m/s}^2\text{)}^2\text{/Hz}$
Acceleration	0.8g
Test duration per axis	5 h
Test directions	X-, Y- and Z-axis
Result	Test passed

Shocks

Specification	DIN EN 50155 (VDE 0115-200):2018-05
Pulse shape	Half-sine
Acceleration	5g
Shock duration	30 ms
Number of shocks per direction	3
Test directions	X-, Y- and Z-axis (pos. and neg.)
Result	Test passed

Ambient conditions

Ambient temperature (operation)	-60 °C ... 105 °C (max. short-term operating temperature RTI Elec.)
Ambient temperature (storage/transport)	-25 °C ... 60 °C (for a short time, not exceeding 24 h, -60 °C to +70 °C)
Ambient temperature (assembly)	-5 °C ... 70 °C
Ambient temperature (actuation)	-5 °C ... 70 °C
Permissible humidity (storage/transport)	30 % ... 70 %

Standards and regulations

Connection in acc. with standard	IEC 60947-7-1
----------------------------------	---------------

Mounting

	NS 35/7,5
--	-----------

RBO 6 E - Bolt connection terminal block



3075906

<https://www.phoenixcontact.com/in/products/3075906>

Mounting type	NS 35/15
	NS 32

RBO 6 E - Bolt connection terminal block

3075906

<https://www.phoenixcontact.com/in/products/3075906>



Drawings

Circuit diagram




RBO 6 E - Bolt connection terminal block





3075906

<https://www.phoenixcontact.com/in/products/3075906>

Approvals

 CSA Approval ID: 13631				
	Nominal Voltage U_N	Nominal Current I_N	Cross Section AWG	Cross Section mm^2
	600 V	115 A	12 - 2	-
	600 V	115 A	12 - 2	-

 cUL Recognized Approval ID: FILE E 60425				
	Nominal Voltage U_N	Nominal Current I_N	Cross Section AWG	Cross Section mm^2
	600 V	115 A	-	-
	600 V	115 A	-	-

 UL Recognized Approval ID: FILE E 60425				
	Nominal Voltage U_N	Nominal Current I_N	Cross Section AWG	Cross Section mm^2
	600 V	115 A	-	-
	600 V	115 A	-	-

RBO 6 E - Bolt connection terminal block



3075906

<https://www.phoenixcontact.com/in/products/3075906>

Classifications

ECLASS

ECLASS-11.0

27141120

ETIM

ETIM 8.0

EC000897

UNSPSC

UNSPSC 21.0

39121400

RBO 6 E - Bolt connection terminal block



3075906

<https://www.phoenixcontact.com/in/products/3075906>

Environmental Product Compliance


China RoHS	Environmentally friendly use period: unlimited = EFUP-e
	No hazardous substances above threshold values

RBO 6 E - Bolt connection terminal block

3075906

<https://www.phoenixcontact.com/in/products/3075906>

Accessories

 Note: Applying some accessories below might limit this product.


FB 10-17 - Fixed bridge

3075951

<https://www.phoenixcontact.com/in/products/3075951>



Fixed bridge, pitch: 17 mm, number of positions: 10, color: silver

 Max. current carrying capacity: 101 A


FB 10-17 ISO - Fixed bridge

3213085

<https://www.phoenixcontact.com/in/products/3213085>



Fixed bridge, pitch: 17 mm, number of positions: 10, color: silver

 Max. current carrying capacity: 24 A

RBO 6 E - Bolt connection terminal block



3075906

<https://www.phoenixcontact.com/in/products/3075906>

TS-KK 3 - Separating plate

2770215

<https://www.phoenixcontact.com/in/products/2770215>



Separating plate, length: 14 mm, width: 0.5 mm, height: 16 mm, color: gray

D-RSC 6 E - End cover

3214013

<https://www.phoenixcontact.com/in/products/3214013>



End cover, length: 80.9 mm, width: 2.2 mm, height: 39.7 mm, color: dark gray

RBO 6 E - Bolt connection terminal block



3075906

<https://www.phoenixcontact.com/in/products/3075906>

AP RSC-T - Cover profile

3059139

<https://www.phoenixcontact.com/in/products/3059139>



Cover profile, for covering terminal strips, directly snapped onto RBO... and RSC... test disconnect terminal blocks. Length supplied: 1 m

SHN 13 - Tool

1209923

<https://www.phoenixcontact.com/in/products/1209923>



Socket wrench, wrench size 13 mm

RBO 6 E - Bolt connection terminal block

3075906

<https://www.phoenixcontact.com/in/products/3075906>

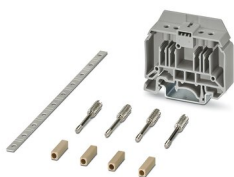


CARRIER 35-13 KIT - Short circuit kit for current transformers

3215067

<https://www.phoenixcontact.com/in/products/3215067>

Short-circuit kit for current transformer. Use with DIN rail mounted RBO/RSC 5 feed-through terminals



NS 32 PERF 2000MM-VPE 10 - DIN rail perforated

1201002

<https://www.phoenixcontact.com/in/products/1201002>

DIN rail perforated, acc. to EN 60715, material: Steel, galvanized, passivated with a thick layer, G profile, color: silver, Pack of 10 (20 m)



RBO 6 E - Bolt connection terminal block

3075906

<https://www.phoenixcontact.com/in/products/3075906>



NS 32 UNPERF 2000MM-VPE 10 - DIN rail, unperforated

1201015

<https://www.phoenixcontact.com/in/products/1201015>



DIN rail, unperforated, acc. to EN 60715, material: Steel, galvanized, passivated with a thick layer, G profile, color: silver, Pack of 10 (20 m)

NS 35/ 7,5 PERF 2000MM - DIN rail perforated

0801733

<https://www.phoenixcontact.com/in/products/0801733>



DIN rail perforated, acc. to EN 60715, material: Steel, galvanized, passivated with a thick layer, Standard profile, color: silver, Pack of 25 (50 m)

RBO 6 E - Bolt connection terminal block

3075906

<https://www.phoenixcontact.com/in/products/3075906>

NS 35/ 7,5 UNPERF 2000MM - DIN rail, unperforated

0801681

<https://www.phoenixcontact.com/in/products/0801681>



DIN rail, unperforated, acc. to EN 60715, material: Steel, galvanized, passivated with a thick layer, Standard profile, color: silver, Pack of 25 (50 m)

NS 35/ 7,5 WH PERF 2000MM - DIN rail perforated

1204119

<https://www.phoenixcontact.com/in/products/1204119>



DIN rail perforated, acc. to EN 60715, material: Steel, Galvanized, white passivated, Standard profile, color: silver, Pack of 25 (50 m)

RBO 6 E - Bolt connection terminal block

3075906

<https://www.phoenixcontact.com/in/products/3075906>



NS 35/ 7,5 WH UNPERF 2000MM-VPE 10 - DIN rail, unperforated

1204122

<https://www.phoenixcontact.com/in/products/1204122>



DIN rail, unperforated, acc. to EN 60715, material: Steel, Galvanized, white passivated, Standard profile, color: silver, Pack of 10 (20 m)

NS 35/ 7,5 AL UNPERF 2000MM - DIN rail, unperforated

0801704

<https://www.phoenixcontact.com/in/products/0801704>



DIN rail, unperforated, acc. to EN 60715, material: Aluminum, uncoated, Standard profile, color: silver, Pack of 25 (50 m)

RBO 6 E - Bolt connection terminal block

3075906

<https://www.phoenixcontact.com/in/products/3075906>

NS 35/ 7,5 ZN PERF 2000MM - DIN rail perforated

1206421

<https://www.phoenixcontact.com/in/products/1206421>



DIN rail perforated, acc. to EN 60715, material: Steel, galvanized, Standard profile, color: silver, Pack of 25 (50 m)

NS 35/ 7,5 ZN UNPERF 2000MM - DIN rail, unperforated

1206434

<https://www.phoenixcontact.com/in/products/1206434>



DIN rail, unperforated, acc. to EN 60715, material: Steel, galvanized, Standard profile, color: silver, Pack of 25 (50 m)

RBO 6 E - Bolt connection terminal block

3075906

<https://www.phoenixcontact.com/in/products/3075906>



NS 35/ 7,5 CU UNPERF 2000MM-VPE 10 - DIN rail, unperforated

0801762

<https://www.phoenixcontact.com/in/products/0801762>



DIN rail, unperforated, acc. to EN 60715, material: Copper, uncoated, Standard profile, color: copper-colored, Pack of 10 (20 m)

NS 35/ 7,5 CAP - End cap

1206560

<https://www.phoenixcontact.com/in/products/1206560>

DIN rail end piece, for DIN rail NS 35/7.5



RBO 6 E - Bolt connection terminal block

3075906

<https://www.phoenixcontact.com/in/products/3075906>

NS 35/15 PERF 2000MM - DIN rail perforated

1201730

<https://www.phoenixcontact.com/in/products/1201730>



DIN rail perforated, similar to EN 60715, material: Steel, galvanized, passivated with a thick layer, Standard profile, color: silver, Pack of 25 (50 m)

NS 35/15 UNPERF 2000MM - DIN rail, unperforated

1201714

<https://www.phoenixcontact.com/in/products/1201714>



DIN rail, unperforated, similar to EN 60715, material: Steel, galvanized, passivated with a thick layer, Standard profile, color: silver, Pack of 25 (50 m)

RBO 6 E - Bolt connection terminal block

3075906

<https://www.phoenixcontact.com/in/products/3075906>

NS 35/15 WH PERF 2000MM - DIN rail perforated

0806602

<https://www.phoenixcontact.com/in/products/0806602>



DIN rail perforated, similar to EN 60715, material: Steel, Galvanized, white passivated, Standard profile, color: white, Pack of 25 (50 m)

NS 35/15 WH UNPERF 2000MM-VPE 10 - DIN rail, unperforated

1204135

<https://www.phoenixcontact.com/in/products/1204135>



DIN rail, unperforated, similar to EN 60715, material: Steel, Galvanized, white passivated, Standard profile, color: silver, Pack of 10 (20 m)

RBO 6 E - Bolt connection terminal block

3075906

<https://www.phoenixcontact.com/in/products/3075906>

NS 35/15 AL UNPERF 2000MM - DIN rail, unperforated

1201756

<https://www.phoenixcontact.com/in/products/1201756>



DIN rail, unperforated, similar to EN 60715, material: Aluminum, uncoated, Standard profile, color: silver

NS 35/15 ZN PERF 2000MM - DIN rail perforated

1206599

<https://www.phoenixcontact.com/in/products/1206599>



DIN rail perforated, similar to EN 60715, material: Steel, galvanized, Standard profile, color: silver, Pack of 25 (50 m)

RBO 6 E - Bolt connection terminal block

3075906

<https://www.phoenixcontact.com/in/products/3075906>

NS 35/15 ZN UNPERF 2000MM - DIN rail, unperforated

1206586

<https://www.phoenixcontact.com/in/products/1206586>



DIN rail, unperforated, similar to EN 60715, material: Steel, galvanized, Standard profile, color: silver, Pack of 25 (50 m)

NS 35/15 CU UNPERF 2000MM-VPE 10 - DIN rail, unperforated

1201895

<https://www.phoenixcontact.com/in/products/1201895>



DIN rail, unperforated, similar to EN 60715, material: Copper, uncoated, Standard profile, color: copper-colored, Pack of 10 (20 m)

RBO 6 E - Bolt connection terminal block

3075906

<https://www.phoenixcontact.com/in/products/3075906>



NS 35/15 CAP - End cap

1206573

<https://www.phoenixcontact.com/in/products/1206573>

DIN rail end piece, for DIN rail NS 35/15



NS 35/15-2,3 UNPERF 2000MM-VPE 10 - DIN rail, unperforated

1201798

<https://www.phoenixcontact.com/in/products/1201798>



DIN rail, unperforated, acc. to EN 60715, material: Steel, galvanized, passivated with a thick layer, Standard profile 2.3 mm, color: silver, Pack of 10 (20 m)

RBO 6 E - Bolt connection terminal block

3075906

<https://www.phoenixcontact.com/in/products/3075906>

ZB 17:UNBEDRUCKT - Zack marker strip

0829391

<https://www.phoenixcontact.com/in/products/0829391>

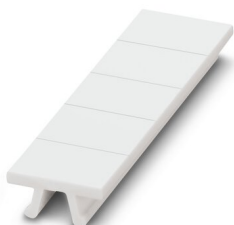


Zack marker strip, Strip, white, unlabeled, can be labeled with: PLOTMARK, CMS-P1-PLOTTER, mounting type: snapped, for terminal block width: 17 mm, lettering field size: 17 x 10.5 mm, Number of individual labels: 5

ZB 17 CUS - Zack marker strip

0829393

<https://www.phoenixcontact.com/in/products/0829393>



Zack marker strip, can be ordered: Strip, white, labeled according to customer specifications, mounting type: snap into tall marker groove, for terminal block width: 17 mm, lettering field size: 17 x 10.5 mm, Number of individual labels: 50

RBO 6 E - Bolt connection terminal block

3075906

<https://www.phoenixcontact.com/in/products/3075906>

CLIPFIX 35 - End clamp

3022218

<https://www.phoenixcontact.com/in/products/3022218>



Quick mounting end clamp for NS 35/7,5 DIN rail or NS 35/15 DIN rail, with marking option, width: 9.5 mm, color: gray

CLIPFIX 35-5 - End clamp

3022276

<https://www.phoenixcontact.com/in/products/3022276>



Quick mounting end clamp for NS 35/7,5 DIN rail or NS 35/15 DIN rail, with marking option, with parking option for FBS...5, FBS...6, KSS 5, KSS 6, width: 5.15 mm, color: gray

RBO 6 E - Bolt connection terminal block

3075906

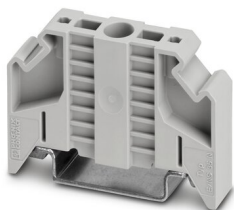
<https://www.phoenixcontact.com/in/products/3075906>

E/NS 35 N - End clamp

0800886

<https://www.phoenixcontact.com/in/products/0800886>

End clamp, width: 9.5 mm, color: gray



E/UK - End clamp

1201442

<https://www.phoenixcontact.com/in/products/1201442>

End clamp, material: PA, color: gray, Mounting on a DIN rail NS 32 or NS 35



RBO 6 E - Bolt connection terminal block



3075906

<https://www.phoenixcontact.com/in/products/3075906>

E/UK 1 - End clamp

1201413

<https://www.phoenixcontact.com/in/products/1201413>



End clamps, for supporting the ends of double-level and three-level terminal blocks, width: 10 mm, color: gray

Phoenix Contact 2023 © - all rights reserved

<https://www.phoenixcontact.com>

PHOENIX CONTACT (I) Pvt. Ltd.

A-58/2, Okhla Industrial Area, Phase - II, New Delhi-110 020

+91.1275.71420

info@phoenixcontact.co.in