

# MBK-FS/FS - Mini feed-through terminal block



1406014

<https://www.phoenixcontact.com/in/products/1406014>

Please be informed that the data shown in this PDF document is generated from our Online Catalog. Please find the complete data in the user documentation. Our General Terms of Use for Downloads are valid.



Mini feed-through terminal block, nom. voltage: 400 V, nominal current: 16 A, 1 level, connection method: Spade connection, cross section: 0.5 mm<sup>2</sup> - 1 mm<sup>2</sup>, mounting: NS 15, color: gray

## Your advantages

- Clear arrangement thanks to marking of all terminal points
- Space saving thanks to compact design and mounting option on a 15 mm DIN rail
- Easy potential distribution thanks to standardized plug-in bridges

## Commercial Data

Item number	1406014
Packing unit	200 pc
Minimum order quantity	1 pc
Sales Key	BE5
Product Key	BE511X
Catalog Page	Page 313 (CL-2005)
GTIN	4017918021023
Weight per Piece (including packing)	2.3 g
Weight per Piece (excluding packing)	2.085 g
Customs tariff number	85369010
Country of origin	DE

# MBK-FS/FS - Mini feed-through terminal block



1406014

<https://www.phoenixcontact.com/in/products/1406014>

## Technical Data

### Product properties

Product type	Miniature terminal block
Number of connections	8
Number of rows	1
Potentials	1

### Insulation characteristics

Overvoltage category	III
Degree of pollution	3

### Electrical properties

Rated surge voltage	6 kV
Maximum power dissipation for nominal condition	0 W

### Connection data

Number of connections per level	2
---------------------------------	---

#### 1 level

Spade connection	6.3/2.8 x 0.8 mm
Connection in acc. with standard	IEC 60947-7-1
Conductor cross section rigid	0.5 mm <sup>2</sup> ... 1 mm <sup>2</sup>
Cross section AWG	20 ... 18 (converted acc. to IEC)
Conductor cross section flexible	0.5 mm <sup>2</sup> ... 1 mm <sup>2</sup>
Conductor cross section, flexible [AWG]	20 ... 18 (converted acc. to IEC)
Flexible conductor cross section (ferrule with plastic sleeve)	0.5 mm <sup>2</sup> ... 1 mm <sup>2</sup>
Nominal current	16 A (current data for slip-on connections in acc. with DIN 61210 are also dependent on nominal size, material, insulation of the sleeve and conductor cross section.)
Maximum load current	16 A (current data for slip-on connections in acc. with DIN 61210 are also dependent on nominal size, material, insulation of the sleeve and conductor cross section.)
Nominal voltage	400 V (voltage data for slip-on connections in acc. with DIN 61210 are also dependent on nominal size, material, insulation of the sleeve and conductor cross section.)

### Dimensions

Width	5.2 mm
Height NS 15	23 mm
Height	0.906 "
Length	22 mm

### Material specifications

Color	gray
Flammability rating according to UL 94	V2

# MBK-FS/FS - Mini feed-through terminal block



1406014

<https://www.phoenixcontact.com/in/products/1406014>

Insulating material group	I
Insulating material	PA
Temperature index of insulation material (DIN EN 60216-1 (VDE 0304-21))	125 °C
Relative insulation material temperature index (Elec., UL 746 B)	125 °C

## Mechanical properties

### Mechanical data

Open side panel	No
-----------------	----

## Environmental and real-life conditions

### Ambient conditions

Ambient temperature (operation)	-60 °C ... 105 °C (max. short-term operating temperature RTI Elec.)
Ambient temperature (storage/transport)	-25 °C ... 60 °C (for a short time, not exceeding 24 h, -60 °C to +70 °C)
Ambient temperature (assembly)	-5 °C ... 70 °C
Ambient temperature (actuation)	-5 °C ... 70 °C
Permissible humidity (storage/transport)	30 % ... 70 %

## Standards and regulations

Connection in acc. with standard	IEC 60947-7-1
----------------------------------	---------------

## Mounting

Mounting type	NS 15
---------------	-------

# MBK-FS/FS - Mini feed-through terminal block

1406014

<https://www.phoenixcontact.com/in/products/1406014>



## Drawings

Circuit diagram




# MBK-FS/FS - Mini feed-through terminal block




1406014

<https://www.phoenixcontact.com/in/products/1406014>

## Approvals

 <b>CSA</b> Approval ID: 13631				
	Nominal Voltage $U_N$	Nominal Current $I_N$	Cross Section AWG	Cross Section $\text{mm}^2$
	150 V	20 A	22 - 14	-

 <b>EAC</b> Approval ID: RU C-DE.BL08.B.00541				
---	--	--	--	--

# MBK-FS/FS - Mini feed-through terminal block



1406014

<https://www.phoenixcontact.com/in/products/1406014>

## Classifications

### ECLASS

ECLASS-11.0

27141120

### ETIM

ETIM 8.0

EC000897

### UNSPSC

UNSPSC 21.0

39121400

# MBK-FS/FS - Mini feed-through terminal block



1406014

<https://www.phoenixcontact.com/in/products/1406014>

## Environmental Product Compliance

China RoHS	Environmentally friendly use period: unlimited = EFUP-e
	No hazardous substances above threshold values

# MBK-FS/FS - Mini feed-through terminal block



1406014

<https://www.phoenixcontact.com/in/products/1406014>

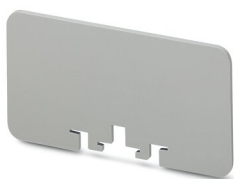
## Accessories

### TP-BK/MBK - Separating plate

0801791

<https://www.phoenixcontact.com/in/products/0801791>

Separating plate, length: 80 mm, width: 2 mm, height: 42 mm, color: gray



---

### ATP-MBK - Partition plate

1413227

<https://www.phoenixcontact.com/in/products/1413227>

Partition plate, length: 42.5 mm, width: 2.5 mm, height: 30.5 mm, color: gray





# MBK-FS/FS - Mini feed-through terminal block

1406014

<https://www.phoenixcontact.com/in/products/1406014>

## ATS-MBK - Separating plate

1402225

<https://www.phoenixcontact.com/in/products/1402225>



Separating plate, length: 30 mm, width: 0.5 mm, height: 26.6 mm, color: gray

---

## BN WH - Marker for terminal blocks

1401404

<https://www.phoenixcontact.com/in/products/1401404>



Marker for terminal blocks, Stud, white, unlabeled, can be labeled with: Marker pen, mounting type: plug in, for terminal block width: 4.2 mm, lettering field size: 4 x 4 mm

# MBK-FS/FS - Mini feed-through terminal block

1406014

<https://www.phoenixcontact.com/in/products/1406014>



## BN-ZB 5,2/WH CUS - Marker pin Zack strip

0824271

<https://www.phoenixcontact.com/in/products/0824271>



Marker pin Zack strip, Strip, can be ordered: Strip, white, labeled according to customer specifications, mounting type: plug in, for terminal block width: 5.2 mm, lettering field size: 4 x 4 mm, Number of individual labels: 10

---

## NS 15 UNPERF 2000MM VPE 10 - DIN rail, unperforated

1401695

<https://www.phoenixcontact.com/in/products/1401695>



DIN rail, unperforated, acc. to EN 60715, material: Steel, galvanized, passivated with a thick layer, Standard profile, color: silver, Pack of 10 (20 m)

# MBK-FS/FS - Mini feed-through terminal block

1406014

<https://www.phoenixcontact.com/in/products/1406014>



## NS 15 PERF 2000MM VPE 10 - DIN rail perforated

1401682

<https://www.phoenixcontact.com/in/products/1401682>



DIN rail perforated, acc. to EN 60715, material: Steel, galvanized, passivated with a thick layer, Standard profile, color: silver, Pack of 10 (20 m)

---

## NS 15 AL PERF 2000MM VPE 10 - DIN rail perforated

1401763

<https://www.phoenixcontact.com/in/products/1401763>



DIN rail perforated, acc. to EN 60715, material: Aluminum, uncoated, Standard profile, color: silver, Pack of 10 (20 m)

# MBK-FS/FS - Mini feed-through terminal block

1406014

<https://www.phoenixcontact.com/in/products/1406014>



## NS 15 WH PERF 2000MM-VPE 10 - DIN rail perforated

1204096

<https://www.phoenixcontact.com/in/products/1204096>



DIN rail perforated, acc. to EN 60715, material: Steel, Galvanized, white passivated, Standard profile, color: silver, Pack of 10 (20 m)

---

## E/MBK - End clamp

1401637

<https://www.phoenixcontact.com/in/products/1401637>



End clamp, width: 6.2 mm, color: gray

# MBK-FS/FS - Mini feed-through terminal block

1406014

<https://www.phoenixcontact.com/in/products/1406014>

## E/MK - End clamp

1421633

<https://www.phoenixcontact.com/in/products/1421633>

End clamp, width: 6.2 mm, color: gray



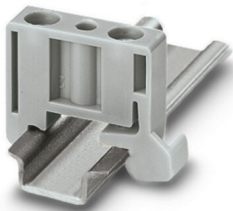
---

## E/MK 1 - End clamp

1421659

<https://www.phoenixcontact.com/in/products/1421659>

End clamp width: 6 mm, color: gray



# MBK-FS/FS - Mini feed-through terminal block

1406014

<https://www.phoenixcontact.com/in/products/1406014>

## C-SCF 1/2,8X0,5 - Connector

3240152

<https://www.phoenixcontact.com/in/products/3240152>



Slip-on sleeve, non-insulated, 0.5 ... 1 mm<sup>2</sup>, 2.8 x 0.5

---

## C-SCFI 1,5/2,8X0,5 - Connector

3240048

<https://www.phoenixcontact.com/in/products/3240048>



Slip-on sleeve, red, 0.5 ... 1.5 mm<sup>2</sup>, 2.8 x 0.5

# MBK-FS/FS - Mini feed-through terminal block

1406014

<https://www.phoenixcontact.com/in/products/1406014>

## C-SCF 1/2,8X0,8 - Connector

3240153

<https://www.phoenixcontact.com/in/products/3240153>



Slip-on sleeve, non-insulated, 0.5 ... 1 mm<sup>2</sup>, 2.8 x 0.8

---

## C-SCFI 1,5/2,8X0,8 - Connector

3240049

<https://www.phoenixcontact.com/in/products/3240049>



Slip-on sleeve, red, 0.5 ... 1.5 mm<sup>2</sup>, 2.8 x 0.8

# MBK-FS/FS - Mini feed-through terminal block

1406014

<https://www.phoenixcontact.com/in/products/1406014>

## C-SCF 1,5/6,3X0,8 - Connector

3240156

<https://www.phoenixcontact.com/in/products/3240156>



Slip-on sleeve, non-insulated, 0.5 ... 1.5 mm<sup>2</sup>, 6.3 x 0.8

---

## C-SCFI 1,5/6,3X0,8 - Connector

3240052

<https://www.phoenixcontact.com/in/products/3240052>



Slip-on sleeve, red, 0.5 ... 1.5 mm<sup>2</sup>, 6.3 x 0.8



# MBK-FS/FS - Mini feed-through terminal block

1406014

<https://www.phoenixcontact.com/in/products/1406014>



## C-SCF 2,5/6,3X0,8 - Connector

3240159

<https://www.phoenixcontact.com/in/products/3240159>



Slip-on sleeve, non-insulated, 1.5 ... 2.5 mm<sup>2</sup>, 6.3 x 0.8

---

## C-SCFI 2,5/6,3X0,8 - Connector

3240055

<https://www.phoenixcontact.com/in/products/3240055>



Slip-on sleeve, blue, 1.5 ... 2.5 mm<sup>2</sup>, 6.3 x 0.8

# MBK-FS/FS - Mini feed-through terminal block

1406014

<https://www.phoenixcontact.com/in/products/1406014>



## C-SCF 6/6,3X0,8 - Connector

3240160

<https://www.phoenixcontact.com/in/products/3240160>



Slip-on sleeve, non-insulated, 4 ... 6 mm<sup>2</sup>, 6.3 x 0.8

---

## C-SCFI 6/6,3X0,8 - Connector

3240056

<https://www.phoenixcontact.com/in/products/3240056>



Slip-on sleeve, yellow, 4 ... 6 mm<sup>2</sup>, 6.3 x 0.8

# MBK-FS/FS - Mini feed-through terminal block



1406014

<https://www.phoenixcontact.com/in/products/1406014>

## PT/FS 2,8 - Insulating sleeve

1406700

<https://www.phoenixcontact.com/in/products/1406700>

Insulating sleeve, as touch protection, slide onto the conductor before for 2.8 slip-on sleeves



---

## PT/FS 6,3 - Insulating sleeve

0604707

<https://www.phoenixcontact.com/in/products/0604707>

Insulating sleeve, as touch protection, slide onto the conductor before for 6.3 slip-on sleeves



---

Phoenix Contact 2023 © - all rights reserved  
<https://www.phoenixcontact.com>

PHOENIX CONTACT (I) Pvt. Ltd.  
A-58/2, Okhla Industrial Area, Phase - II, New Delhi-110 020

+91.1275.71420  
[info@phoenixcontact.co.in](mailto:info@phoenixcontact.co.in)