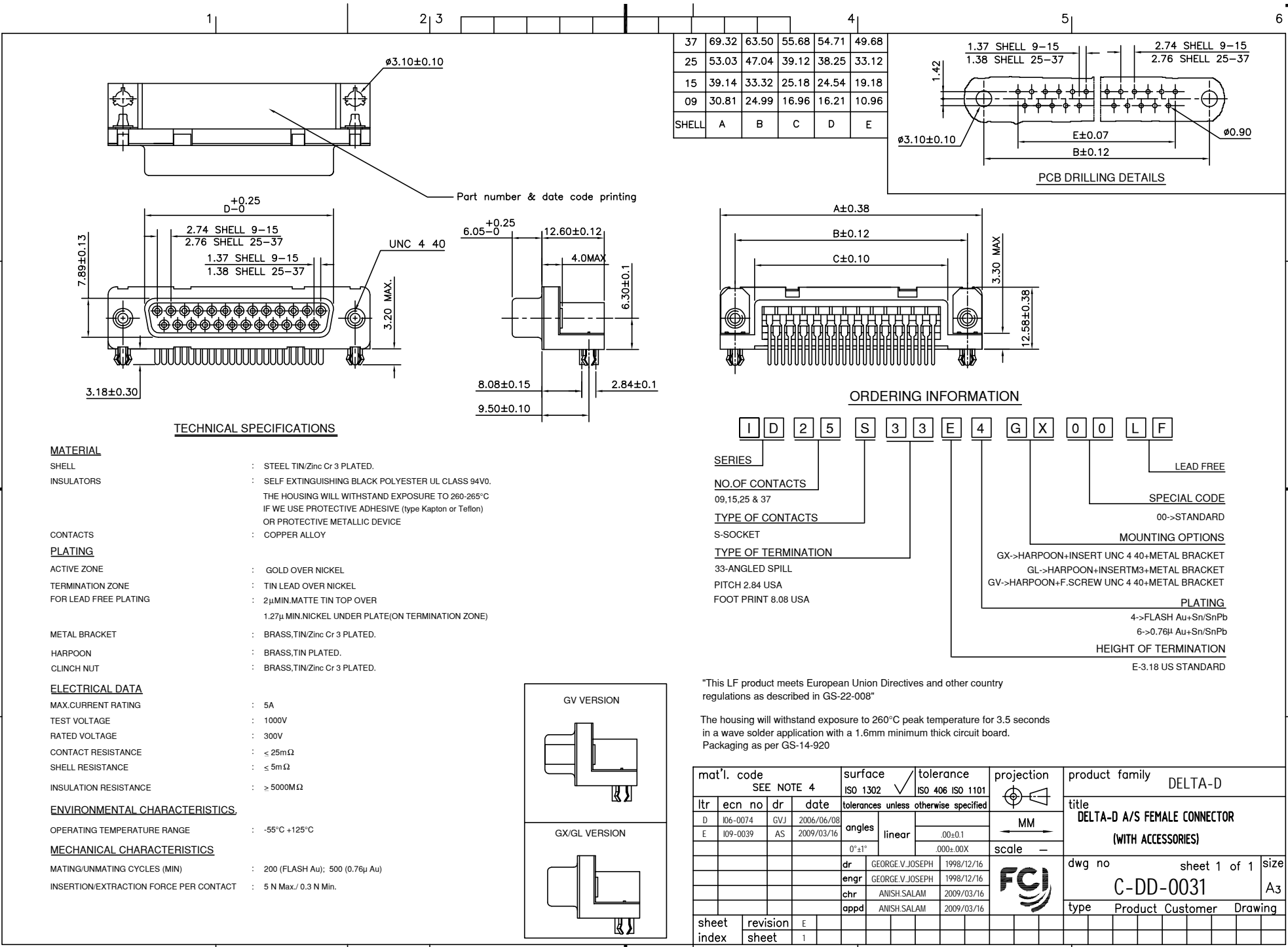


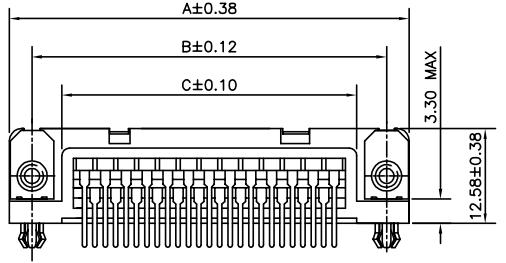
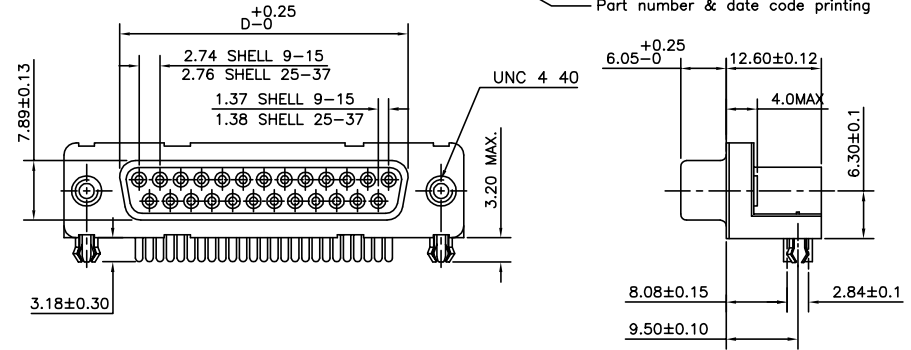
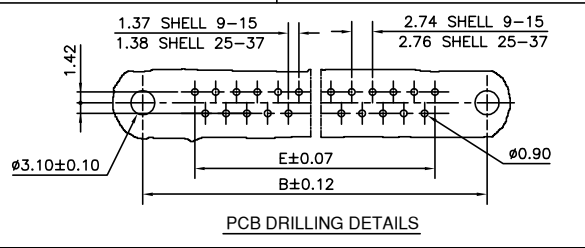


FCIconnect.com

Copyright FCI



37	69.32	63.50	55.68	54.71	49.68
25	53.03	47.04	39.12	38.25	33.12
15	39.14	33.32	25.18	24.54	19.18
09	30.81	24.99	16.96	16.21	10.96
SHELL	A	B	C	D	E



**TECHNICAL SPECIFICATIONS**

**MATERIAL**

SHELL : STEEL TIN/Zinc Cr 3 PLATED.

INSULATORS : SELF EXTINGUISHING BLACK POLYESTER UL CLASS 94V0.  
THE HOUSING WILL WITHSTAND EXPOSURE TO 260-265°C  
IF WE USE PROTECTIVE ADHESIVE (Type Kapton or Teflon)  
OR PROTECTIVE METALLIC DEVICE

CONTACTS : COPPER ALLOY

**PLATING**

ACTIVE ZONE : GOLD OVER NICKEL

TERMINATION ZONE : TIN LEAD OVER NICKEL

FOR LEAD FREE PLATING : 2µMIN.MATTE TIN TOP OVER  
1.27µ MIN.NICKEL UNDER PLATE(ON TERMINATION ZONE)

METAL BRACKET : BRASS,TIN/Zinc Cr 3 PLATED.

HARPOON : BRASS,TIN PLATED.

CLINCH NUT : BRASS,TIN/Zinc Cr 3 PLATED.

**ELECTRICAL DATA**

MAX.CURRENT RATING : 5A

TEST VOLTAGE : 1000V

RATED VOLTAGE : 300V

CONTACT RESISTANCE : ≤ 25mΩ

SHELL RESISTANCE : ≤ 5mΩ

INSULATION RESISTANCE : ≥ 5000MΩ

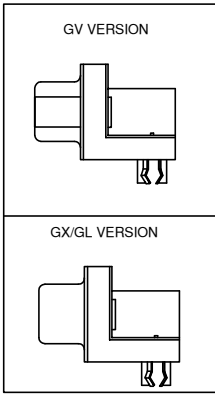
**ENVIRONMENTAL CHARACTERISTICS.**

OPERATING TEMPERATURE RANGE : -55°C +125°C

**MECHANICAL CHARACTERISTICS**

MATING/UNMATING CYCLES (MIN) : 200 (FLASH Au); 500 (0.76µ Au)

INSERTION/EXTRACTION FORCE PER CONTACT : 5 N Max./ 0.3 N Min.



**ORDERING INFORMATION**

DELTA-D A/S FEMALE CONNECTOR (WITH ACCESSORIES)

Series: I D 2 5 S 3 3 E 4 G X 0 0 L F

LEAD FREE

SPECIAL CODE

00->STANDARD

MOUNTING OPTIONS

GX->HARPOON+INSERT UNC 4 40+METAL BRACKET  
GL->HARPOON+INSERTM3+METAL BRACKET  
GV->HARPOON+F.SCREW UNC 4 40+METAL BRACKET

PLATING

4->FLASH Au+Sn/SnPb  
6->0.76µ Au+Sn/SnPb

HEIGHT OF TERMINATION

E-3.18 US STANDARD

"This LF product meets European Union Directives and other country regulations as described in GS-22-008"

The housing will withstand exposure to 260°C peak temperature for 3.5 seconds in a wave solder application with a 1.6mm minimum thick circuit board. Packaging as per GS-14-920

mat'l. code		surface		tolerance		projection		product family	
SEE NOTE 4		ISO 1302		ISO 406 ISO 1101				DELTA-D	
ltr	ecn no	dr	date	tolerances unless otherwise specified		MM		title	
D	106-0074	GVJ	2006/06/08	angles	linear	0.00±0.1		DELTA-D A/S FEMALE CONNECTOR	
E	109-0039	AS	2009/03/16	0°±1°		0.00±0.00X		(WITH ACCESSORIES)	
		dr	GEORGE.V.JOSEPH	1998/12/16		scale		dwg no	
		enrg	GEORGE.V.JOSEPH	1998/12/16		FCI		sheet 1 of 1	
		chr	ANISH.SALAM	2009/03/16				size	
		appd	ANISH.SALAM	2009/03/16				A3	
sheet index		revision sheet	E					type	
		1						Product Customer Drawing	

form: A3