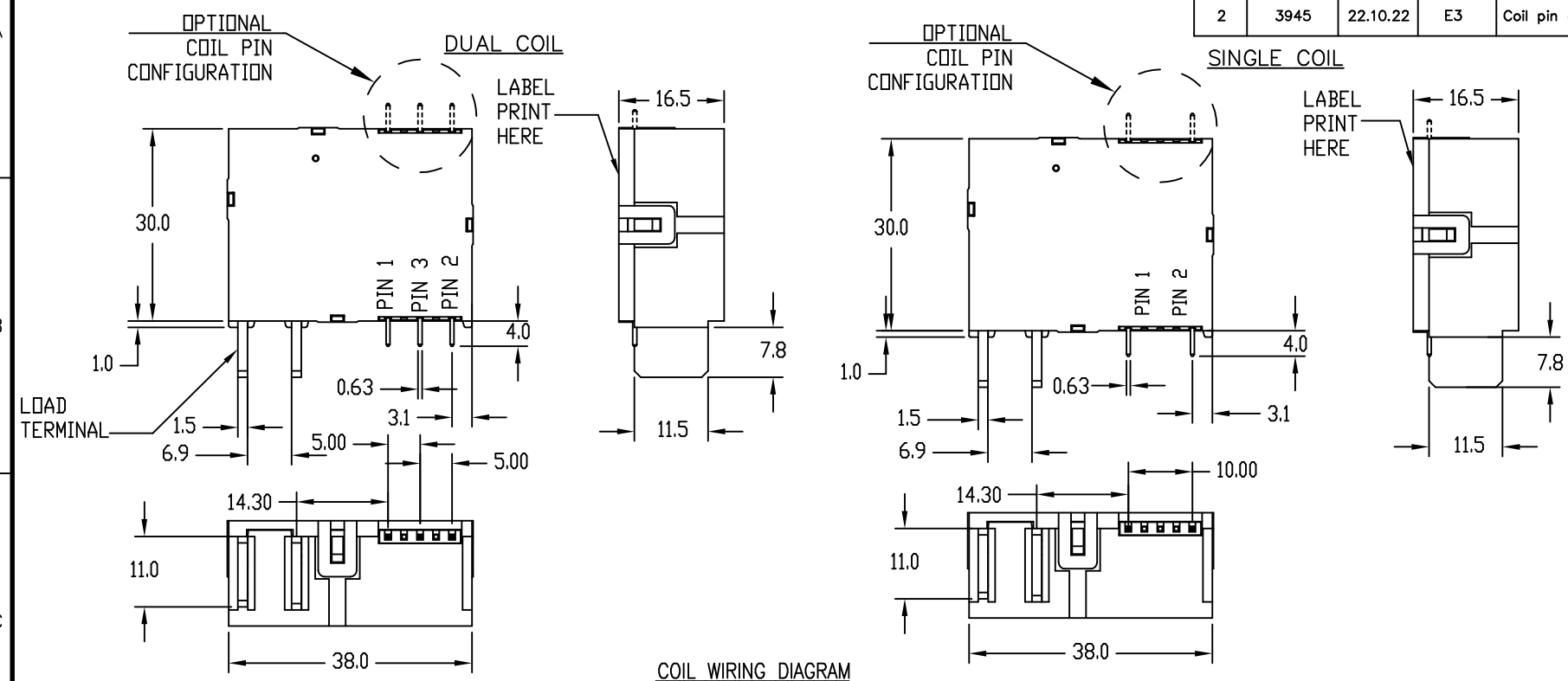


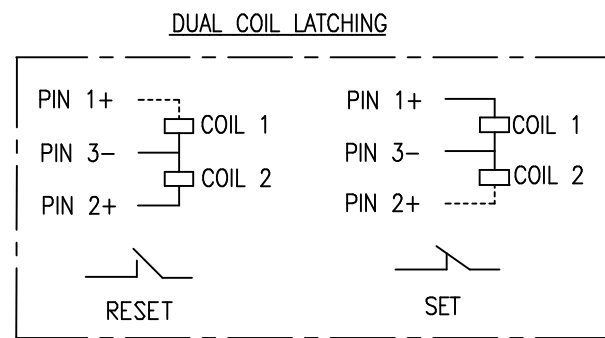
| REVISIONS |         |          |          |   |      |           |  |
|-----------|---------|----------|----------|---|------|-----------|--|
| REV.      | ECN NO. | DATE     | ZONE     | DESCRIPTION   | NAME | SIGN/DATE |  |
| 1         | 3555    | 22.10.20 | A2,A4,F3 | Coil pin configuration updated, Set/Reset Voltage updated | NK   |           |  |
| 2         | 3945    | 22.10.22 | E3       | Coil pin configuration added in part number               | ARK  |           |  |

**DIMENSIONS**



**SPECIFICATION**

|                            |  |
|----------------------------|--|
| CONTACT CONFIGURATION      | : 1 FORM A/B   |
| CONTACT MATERIAL           | : SILVER ALLOY   |
| RATED LOAD                 | : 90A@230VAC   |
| MAXIMUM SWITCHING VOLTAGE  | : 277VAC   |
| MAXIMUM SWITCHING CURRENT  | : 90A  |
| MAXIMUM AC SWITCHING POWER | : 24930VA  |
| PULSE WIDTH                | : 100ms MIN.   |
| COIL POWER                 | : 1.5W (SINGLE COIL)<br>3.0W (DUAL COIL)                           |
| CONTACT RESISTANCE         | : 0.45mΩ   |
| DIELECTRIC STRENGTH        |  |
| BETWEEN COIL AND CONTACTS  | : 4000VAC FOR 1 MIN.   |
| BETWEEN OPEN CONTACTS      | : 2000VAC FOR 1 MIN.   |
| INSULATION RESISTANCE      | : 1000MΩ MIN@500VDC  |
| CREEPAGE DISTANCE          | : 8mm  |
| VIBRATION RESISTANCE       | : 10-55Hz 1.5mm DA   |
| SHOCK RESISTANCE           | : FUNCTIONAL-98m/s <sup>2</sup><br>DESTRUCTIVE-980m/s <sup>2</sup> |
| HUMIDITY                   | : 5% TO 85% RH   |
| SET TIME                   | : 20ms MAX.  |
| RESET TIME                 | : 20ms MAX.  |
| CONSTRUCTION               | : DUST PROTECTED   |
| AMBIENT TEMPERATURE        | : -40°C TO +70°C   |
| WEIGHT                     | : 50g MAX.   |
| SEVERITY CLASS             | : UC2 *  |



**PRODUCT CODING**  
170-90-XX-XX-X-XX

PRODUCT SERIES: 170-90-XX-XX-X-XX  
 CURRENT RATING: XX  
 NOMINAL COIL VOLTAGE: X-XX  
 COIL PIN CONFIGURATION: D - COIL PIN AT LOAD TERMINAL SIDE, U - COIL PINE OPP. LOAD TERMINAL SIDE  
 COIL MODEL: 1- SINGLE COIL LATCHING, 2- DUAL COIL LATCHING  
 CONTACT CONFIGURATION: 1A-1 FORM A, 1B-1 FORM B

**PRINTING DETAILS**  
O/E/N  
170-90-XX-XX-X-XXX  
COIL XXΩ  
XXXX

**DATE CODE DETAILS**  
XXXXXX  
YEAR: XX, WEEK: XX, SPECIALITY CODE: XX, DAY: XX

**COIL DATA - AT 25°C AMBIENT TEMPERATURE**

| NOMINAL VOLT VDC | COIL RESISTANCE IN OHMS ± 10% (SINGLE COIL) | COIL RESISTANCE IN OHMS ± 10% (DUAL COIL) | MUST SET/RESET VOLT IN VDC |
|------------------|---|---|----------------------------|
| 5                | 16  | 8+8                                       | 3.75                       |
| 6                | 24  | 12+12                                     | 4.50                       |
| 9                | 54  | 27+27                                     | 6.75                       |
| 12               | 96  | 48+48                                     | 9.00                       |
| 24               | 384   | 192+192                                   | 18.00                      |
| 48               | 1536  | 768+768                                   | 36.00                      |

- Customer Specific Requirements
- Multiple configuration of Coil Pin.
  - Custom built load terminal
  - Load terminal with shunt

**TEST CONDITION**

|   |   |
|---|---|
| ELECTRICAL ENDURANCE                                    | : 10000 CYCLES                            |
| MECHANICAL LIFE   | : 1x10 <sup>5</sup> OPERATIONS ON NO LOAD |
| SHORT CIRCUIT CAPABILITY                                |   |
| 1) FAULT CURRENT MAKING CAPACITY - 2.5kA r.m.s          |   |
| 2) SHORT CIRCUIT CURRENT CARRYING CAPACITY- 4.5kA r.m.s |   |

NOTE: \* IS 15884:2010-UC2 COMPLIANT AT 63A (EQUIVALENT TO IEC 62055-31)

|  |                     |                             |           |
|--|---------------------|-----------------------------|-----------|
| DRAWING IN ACCORDANCE WITH IS 10714                | MATERIAL            | TITLE <b>SPECIFICATION</b>  |           |
| DIMENSIONS IN MM                                   | HEAT TREATMENT      | NAME                        | SIGN/DATE |
| TOLERANCE FOR DIMENSION UNLESS OTHERWISE SPECIFIED | FINISH              | DRAWN                       | ARK       |
| LINEAR .X DECIMALS ±0.5                            | REF.                | CHECKED                     | NK        |
| .XX DECIMALS ±0.15                                 |                     | APPROVED                    | AJ        |
| .XXX DECIMALS ±                                    |                     | ADDL. INFORMATION           |           |
| ANGULAR 0-15° ±1/2'                                |                     | DRAWING NUMBER 170-9000-500 |           |
| 15° & ABOVE ±1'                                    |                     | SCALE 1:1                   | REV. 2    |
| THIRD ANGLE PROJECTION                             | SHEET 1/1           |                             | A3        |
| DO NOT SCALE DRAWING                               | O/E/N India Limited |                             |           |